

# GUILD HALL

Recollections: Selections from the Permanent Collection  
October 21 - December 31, 2017



Adolph Gottlieb (1903–1974)  
*Guild Hall is for Everyone*, 1970  
Offset lithograph  
24 x 19 inches



Frank Stella (b. 1936)  
*Lanckorona III*, 1971  
Mixed media on wood  
108 x 91 x 4 1/2 inches



Bryan Hunt (b. 1947)  
*Plunge-Topside #2*, 1995  
Charcoal on arches paper  
22 1/4 x 30 inches, 31 1/4 x 39 inches  
framed



Adolph Gottlieb (1903–1974)  
*Untitled #67*, 1967  
Acrylic on paper  
20 x 14 3/4 inches

## GUILD HALL

158 Main Street • East Hampton New York 11937 • 631 324 0806 • [GuildHall.org](http://GuildHall.org)



Pat Steir (b. 1940)  
*Wolf Waterfall*, 2001  
Two-color screenprint  
48 x 24 inches



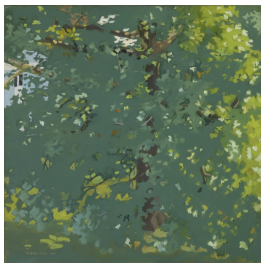
Chuck Close (b. 1940)  
*Phil/Manipulated*, 1982  
Handmade paper pulp in tones of grey  
67 3/4 x 52 inches



Ross Bleckner (b. 1949)  
*Untitled*, 1991  
Oil on canvas  
18 x 14 inches



Jane Wilson (1924–2015)  
*Water Mill Fog*, 1966  
Oil on canvas  
60 x 75 1/2 inches



Fairfield Porter (1907–1975)  
*The Plane Tree*, 1964  
Oil on canvas  
50 x 50 inches



Willem de Kooning (1904–1997)  
*Untitled*, 1974  
Oil on paper mounted on canvas  
41 1/4 x 30 inches



Elaine de Kooning (1919-1989)  
*Bacchus # 63*, 1982  
 Acrylic and charcoal on canvas  
 55 3/4 x 50 inches



Lee Krasner (1908-1984)  
*Shattered Color*, 1947  
 Oil on canvas  
 22 x 26 1/8 inches



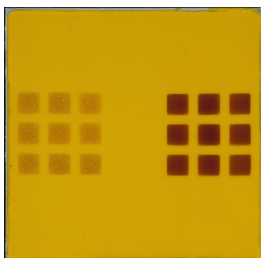
Roy Lichtenstein (1923-1997)  
*Bull Profile Series*, 1973  
 Complete set of six prints, including  
 one line-cut and five lithographs  
 combining silkscreen and line-cut  
 27 x 35 inches each, 33 x 41 x 1 1/4  
 inches framed



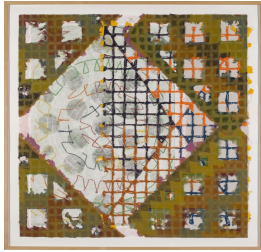
Ibram Lassaw (1913-2003)  
*Morning Star*, 1954  
 Bronze  
 46 x 18 x 16 inches



Costantino Nivola (1911-1988)  
 Untitled, 1952-53  
 Sandcast relief in artist's frame  
 36 1/2 x 66 1/2 inches



John Chamberlain (1927-2011)  
*The Beach Boys*, 1964  
 Auto lacquer and metal flake on  
 formica  
 12 x 12 inches



Alan Shields (1944-2005)  
*Bull-Pen*, 1983-84  
 32 Color woodcut, etching, aquatint,  
 collage on three layers of handmade  
 paper  
 40 1/2 x 42 inches



Alvin Loving (1935-2005)  
*Self Portrait*, 1974  
 Mixed media  
 62 x 82 1/2 inches



Hiroyuki Hamada (b. 1968)  
*#45*, 2002-05  
 Burlap, enamel, oil, plaster, resin, tar  
 and wax  
 20 x 25 x 25 inches